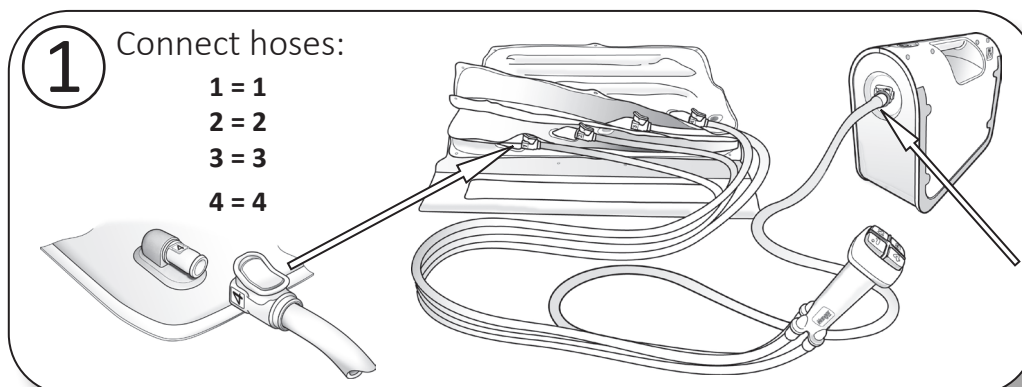
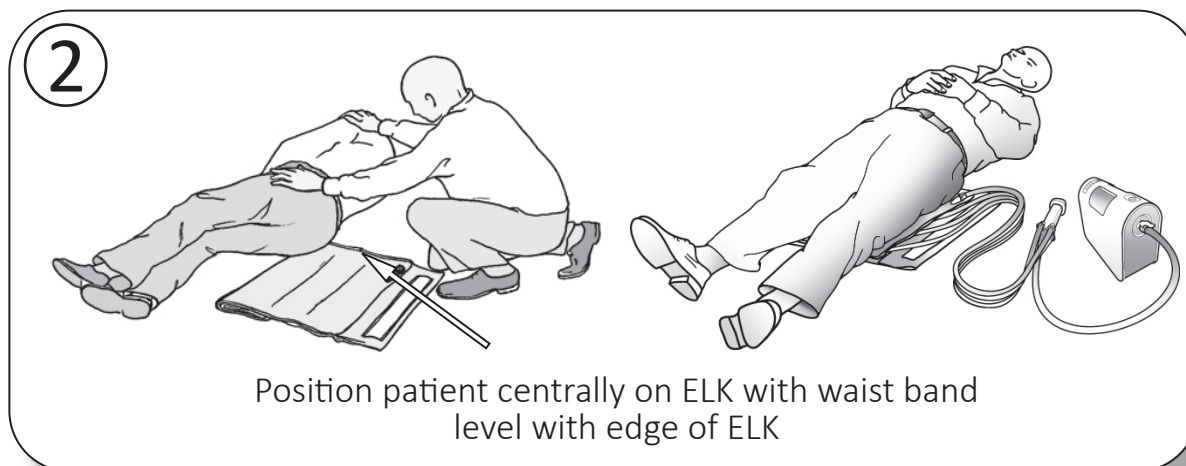


# Mangar Elk Quick Start Guide

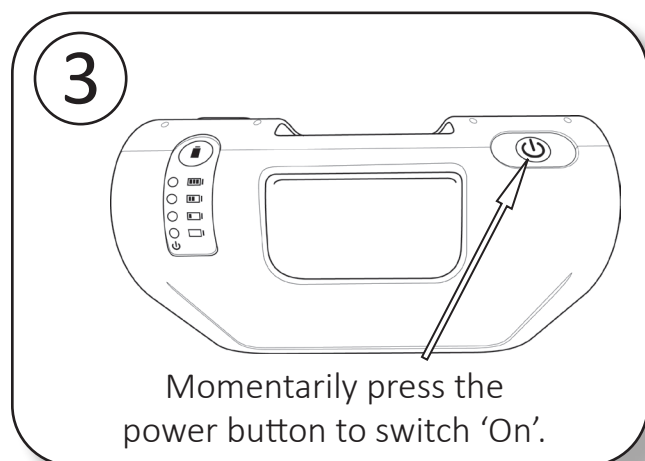
See '**BATTERY NOTE**' page 2 before proceeding. Please read the full product user instructions for the Airflo 24 and ELK.



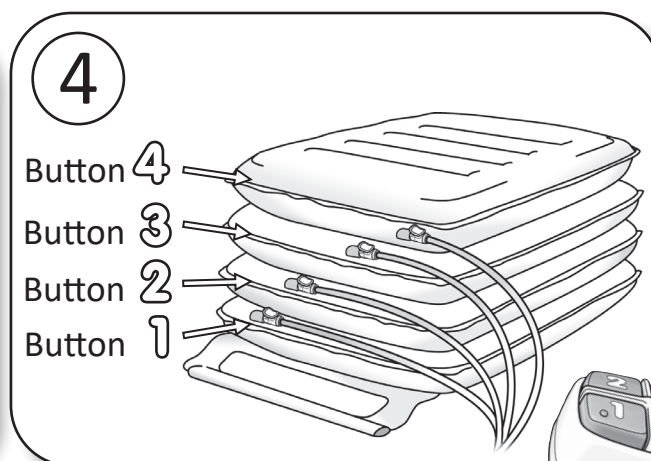
Make the Connections



Position Patient



Switch 'ON'



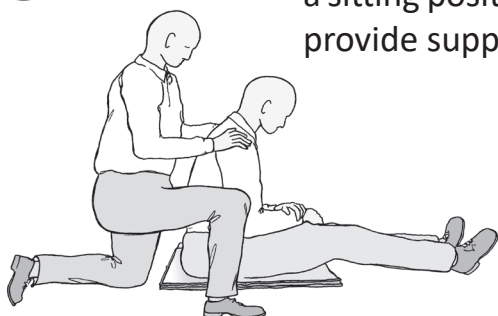
Operate Hand Control Buttons.  
(See 'Lifting Sequence' page 2)



# Mangar Elk Quick Start Guide

5

Bring the patient to a sitting position and provide support.



6

Whilst providing support:

1. Fully inflate section 1
2. Fully inflate section 2
3. Fully inflate section 3
4. Fully inflate section 4



NOTE: The compressor will automatically stop as each section reaches full pressure.

**WARNING:** While in use, **never** allow a section to become partially deflated while any sections above it are inflated. Sections must always be fully inflated from the bottom up, in sequence, in order to maintain stability.

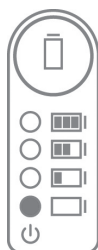
## Cleaning and Disinfecting

The ELK should be fully inflated and pre-cleaned by washing with detergent and water, thoroughly rinsed and then disinfected using a 1:10 solution of household liquid bleach and water (1 part bleach to 10 parts cold water). Leave the solution on the ELK for approximately 10 minutes before thoroughly rinsing off with clean cold water. Allow to air dry before storage. Do not dry using hot air.

**BATTERY NOTE:** Charge for 12 hours before first use. Before each use, check the battery charge state by pressing the 'Battery State Indicator' button (*please read full Airflo 24 User Instructions*).



Press Battery  
State Indicator  
Button



RED  
Recharge  
Immediately



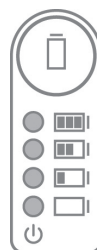
1 GREEN  
Recharge  
before next use



2 GREEN  
Recharge  
soon



3 GREEN  
OK to Use



4 GREEN  
OK to Use

## WinnCare

Presteigne, Powys  
Wales, UK, LD8 2UF  
Tel: +44(0)1544 267674  
enquiries@winnCare.uk  
www.winnCare.uk  
MI0443 Issue 3



## Joerns Healthcare

General: 800.826.0270  
Canada: 866.546.1151  
info@joerns.com  
www.joerns.com  
6240092 RevC • 001093