



BioClinic Series

transforming wound management



BioClinic Series



Joerns BioClinic therapeutic support surfaces are user-friendly, designed for the treatment and prevention of pressure ulcers up to Stage IV, and cost effective. This line of advanced therapy series provides pressure redistribution with three different therapy options dependent on the patient's needs – low air loss, alternating pressure, and alternating pressure combined with low air loss.



We have developed the BioClinic series of support surfaces to complement Joerns bed frames and provide our customers with the ability to:

- ✓ Enhance resident comfort
- ✓ Treat and prevent pressure ulcers
- ✓ Minimize entrapment risk
- ✓ Enhance fall management and other risk mitigation programs

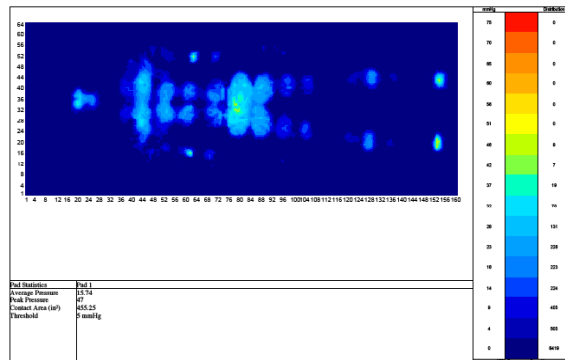
Clinical Indications

Pressure Redistribution:

- | | |
|-----------------|----------------|
| Pressure Ulcers | Rehabilitation |
| Neurology | Dermatology |
| Burns | Amputations |

Pain Management

- AIDS
- Oncology
- Arthritis



Features

- Superior pressure redistribution provided by twenty individual therapy cells with 8" depth
- Maximum patient comfort and promotion of healing with comfort adjust settings
- Easy to clean and reassemble due to low maintenance modular cell design
- Quilted therapy pad with these unique qualities:
 - Fluid proof and stain resistant
 - Low friction and low shear surface
- Autofirm safely assists patients and caregivers during patient transfers
- Rapid CPR deflation with quick disconnect hose
- HCPCS Code: E0277 (Group II with control unit)
- UL 60601-1, CAN/CSA C22.2 601.1-M90
- Warranty: 2 years on control unit, 1 year on mattress

BioClinic Low Air Loss Therapy System (LAL)

The BioClinic LAL is an advanced therapy system that offers superior pressure redistribution through low air loss and optional pulsation. Low air loss therapy has been demonstrated to both reduce the risk of pressure ulcers as well as provide treatment of pressure ulcers up to Stage IV. LAL is also effective in providing moisture management. The pulsation feature may provide additional resident comfort while enhancing lymphatic system circulation.



Key Features

- Wicks away moisture to prevent skin maceration
- True low air loss with greater than 100 liters of air flow per minute
- Patient safety in the event of power interruption by two inch Eggcrate® foam layer
- Control unit lock-out feature protects against accidental or unwanted adjustments
- Audible and visual power failure alarm
- Features rapid inflation in five minutes or less

LAL Therapy Modes

Therapy

The therapy system starts in the Therapy mode, which is the low air loss mode, providing full body flotation via 20 static support cells.

Pulsate

Pulsate mode oscillates the inflation in all therapy cells every 30 seconds, from the current setting to the next lowest setting and back.

AutoFirm

This mode may be desirable to assist with resident transfers and other resident care procedures. The therapy system will automatically return to the Therapy mode after approximately 10 minutes.

Technical Specifications

Maximum Weight Capacity	450 lbs. (204 Kg)
Mattress Dimensions	36" (89 cm) W x 80" (203 cm) L x 10" (25 cm) D
Control Unit Weight	10 lbs. (4.5Kg)
Control Unit Dimensions	7.5" (19 cm) W x 12.25" (31 cm) H x 5.5" (14 cm) D
HCPCS Code	E0277 (Group II)
Warranty	2 years on control unit, 1 year on mattress

BioClinic Alternating Pressure Low Air Loss Therapy System (APL)

The BioClinic APL addresses microclimate moisture control and provides pressure redistribution over a wide surface area, optimizing immersion and envelopment. This system minimizes the risk of pressure ulcers and skin breakdown and is a valuable aid in the treatment of pressure ulcers up to Stage IV. For patients experiencing severe pain and discomfort due to pressure and/or positioning limitations, consider the BioClinic APL as an adjunct to pain management interventions.



Key Features

- Flexible therapy options to meet the patient's clinical needs
- True low air loss therapy is delivered via a network of integrated air lines connecting the therapy cells
- Control panel lock out feature to avoid accidental or unwanted adjustment
- Audible and visual power failure alarm
- Audible low pressure alarm

APL Therapy Modes

Therapy

This system provides full body flotation via 20 static support cells.

Alternate

In this mode, the inflation in the therapy cells is automatically alternated in every other cell. The alternation frequency can be set at 5, 10, 15 or 20 minute intervals.

AutoFirm

This mode may be desirable to assist with resident transfers and other patient care procedures. The therapy system will automatically return to the Therapy mode after approximately 10 minutes.

Technical Specifications

Maximum Weight Capacity	400 lbs. (182 Kg)
Available Mattress Dimensions	36" (89 cm) W x 80" (203 cm) L x 8" (20 cm) D 36" (89 cm) W x 84" (243 cm) L x 8" (20 cm) D
Control Unit Weight	10 lbs. (4.5Kg)
Control Unit Dimensions	11.4" (29 cm) W x 7.9" (20 cm) H x 4.6" (12 cm) D
HCPCS Code	E0277 (Group II)
Warranty	2 years on control unit, 1 year on mattress

BioClinic Alternating Pressure Therapy System (APM)



The Joerns BioClinic APM mattress replacement system provides pressure redistribution and a safe, comfortable healing environment for the treatment and prevention of pressure ulcers up to Stage IV. Active pressure redistribution is accomplished by alternating inflation between adjacent air cells.

Key Features

- Control unit alternates inflation between adjacent cells in the mattress – alternate cells grow firmer then soften
- No base support cell needed -- provides patient safety in the event of power interruption
- Most cost-effective system in the BioClinic series

APM Therapy Modes

Therapy

Provides full body flotation via 20 static support cells.

Alternate

In this mode, the inflation in the therapy cells is automatically alternated in every other cell on a 10 minute cycle.

Technical Specifications

Maximum Weight Capacity	350 lbs. (159 Kg)
Available Mattress Dimensions	36" (91 cm) W x 80" (203 cm) L x 8" (20 cm)D
Control Unit Weight	3.5 lbs. (1.6 Kg)
Control Unit Dimensions	11.4" (29 cm) W x 5.6" (14cm) H x 4.9" (12 cm) D
HCPCS Code	E0277 (Group II)
Warranty	2 years on control unit, 1 year on mattress



Post Acute, Acute, HomeCare

5001 Joerns Drive
Stevens Point WI 54481
(P) 800.826.0270
(F) 800.457.8827

VA/Government

19748 Dearborn Street
Chatsworth, CA 91311
(P) 800.966.6662
(F) 800.232.9796

Canadian Office

1000 Clarke Road, Suite 6
London, ON Canada N5V 3A9
(P) 866.546.1151
(F) 519.451.8662